

Rusty Rail

Craftsman Kits and castings in HO and O Scale

Paint/Assembly Instructions for Ho Repair Shed

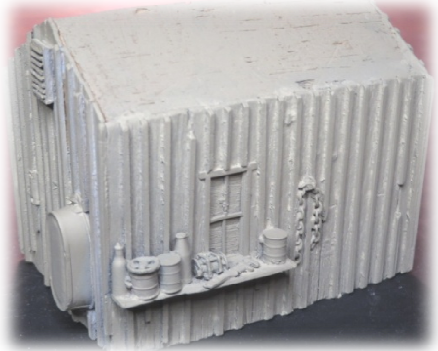
Hi everyone thanks for purchasing our repair shed. First we will start with my simple method to paint the castings to look like wood. I myself always print the main castings before assembly. I **NEVER** wash my castings before I paint them. I use a good primer you pay a few bucks more but the cheaper primer may or may not work. I always use Rust-Oleum Camouflage paint as my primer. I always find it at Wal-Mart and I use the Khaki or Sand color those give you a great base color and it sticks every time. Just make sure not to cover your detail.

After the primer is dry I use a Doctor Bens product called Grimy Dusty Buff for my base coat if it is going to be wood. Doctor Ben's products have been around for a long time and are great. Make sure you stir the product well. Put on a good coat it may not look like it is covering but when it dries you will see the results. Then I would paint any detail molded into the model like tools or brooms and chains etc. Also I only use Acrylic paints only Cream coat is the brand name but any will do.

OK after that dries you then start using an Indian ink mixture as a wash. This is made by mixing real Indian ink and Denatured Alcohol. You can get the real Indian ink at a craft store and the denatured Alcohol at a Lowes store in the paint department. Making your mix you have to play with it to get the correct combo. You do not want it too dark. Just try light coats to get the effect you want. When you apply the wash it goes into all the nooks and crannies and brings out the detail.

You will be amazed with the results and can then experiment with different techniques like dry brushing, using chalks and rub and buff products. I even mix chalks with water and get some wild results.

As far as painting the roof which is three separate pieces I just used flat black on both sides. The shop base I used the wood painting method on the wooden base floorboards and then dirty it up with powers and real dirt and made oil stains in the floor. I have been in old wooden shops buildings with wood floors and you can still smell the oil in the wood after many years.



Ok, now that we have the painted wall castings lets assembly the four main walls. The side walls fit inside the front and back walls. Test the fit on the model base that the walls when assembled will sit on. Then I always use super glue to assemble the walls and attach other items. Once you are happy with the wall lineup on the base, you can add the two wooden beams that you see in the pictures. The kit should have two balsa beams just cut to size and glue in place as in the picture. These provide a structure detail and a place for the roof sections to sit on. Paint them using your wood color. Also I did not glue the walls to my base this way I can remove it at any time and add inside detail or clean then just put it back on the base but that is up to you. You can always glue it down later if need be.



Ok next is adding the roof. Make sure you do not glue the roof sections to the walls so you can remove the roof to view the inside. Again check the castings for fit and sand them or trim them as needed. I would start with the two roof sections for the peaked roof. As you look at the roof sections one piece on the underside has positioning stops that should fit the roof. Make sure the tarpaper roof section has the cast tarpaper going the right way. You will find that it fits the area with the outside wall. Once you have that fitted to where it works. Then take the smaller roof section with no positioning stops and make sure the tarpaper is going the correct direction and fit them together at the peak of the roof. Ok now you will find a piece of silver tape in the package. We will use this tape piece to connect the two roof sections together and also cover the area where the two roof sections come together at the peak of the roof. Makes sure you trim the tape to fit as the roof cap equal on both roof sections. Then remove the tape backing and stick you tape on one side of the roof make sure it is pressed down where you want it to stay, and then stick it to the other roof section for form a peak. Now you have a peaked roof section that allows you to



remove the two roof sections for the peaked roof and they stay together. Now you have to add the flat roof section with the tire and wood on the top. Then after I painted the tape on the roof peak I used a brush to apply dusting powders to the roof then took an old sock and rubbed in a down ward motion to get the desired effect. Next you can add the signs just cut out and place them where you want them with yellow carpenters glue dust them if you want. I provided doors for the front but I preferred not to add them your choice. Also included a gas pump you can add to the model it is up to you. Then you can use your own weather skills to finish it up and add more detail to the inside an out.



Also if you have suggestions on the instructions that may help others please let me know.

Rick -Rusty Rail